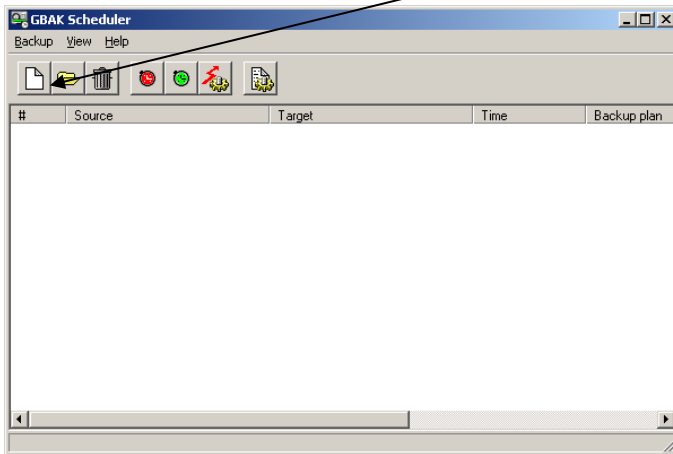


On-Disk Backup Configuration

(This is the internal backup utility for the firebird database server.)
This is to be installed on the Server where the database is located
(This is NOT for a Linux setup)

Go to **X:\RPOffice\reoffice\gbaksche** folder.
(Where X: is the drive where the \X directory resides).
Double click on the **gbaksche.exe** icon

Click the New button in the top left hand corner, which will display the New Backup.
Create a new backup for 6AM & then repeat the process for 8PM.

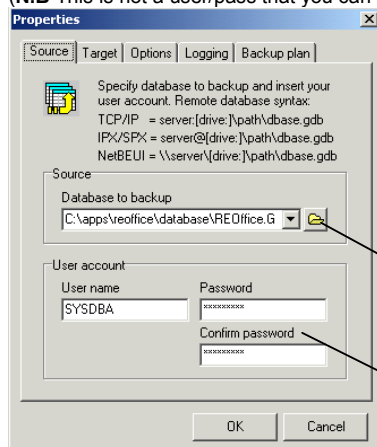


Source Tab:

The location of the RPOffice database – (e.g. X:\X\REOffice\reoffice\database\REOffice.gdb)

User name and Password:

This is a user/pass that firebird will use to open the RPOffice database. This is case sensitive.
(N.B This is not a user/pass that you can use to open the RPOffice program it is entirely for Administration purposes)



Browse to database location

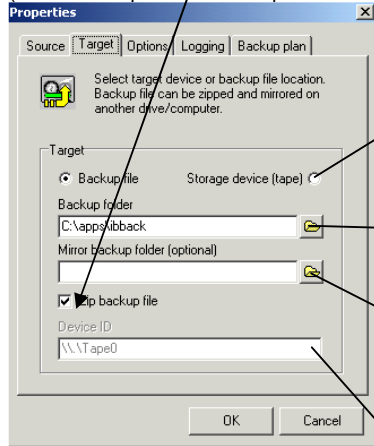
User Name: **SYSDBA**
Password: **masterkey**

Target Tab:

Target: X:\RPOffice\libback.

Check 'Zip backup file'

(This will compress the backup file after the Gbak has completed.)



Tape backup is optional.

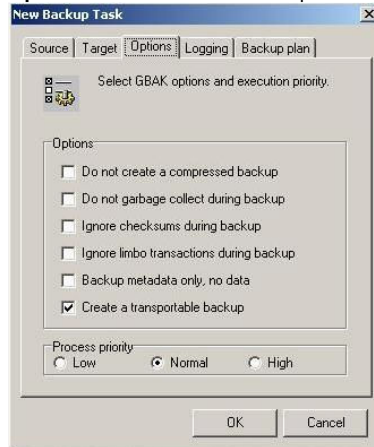
Browse to backup folder

Create a mirror copy to another drive\directory

Location of the tape drive (if installed)

Options Tab:

Options: Gbak Scheduler backup Parameters



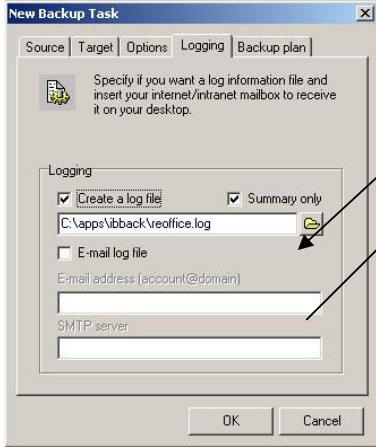
'Create a transportable backup' is the only option needed here.

This will grant you the ability to restore the database in a different version of firebird\interbase or restore to a Linux database server, thus being a transportable backup.

'Process priority' can stay at the default normal.

Logging Tab:

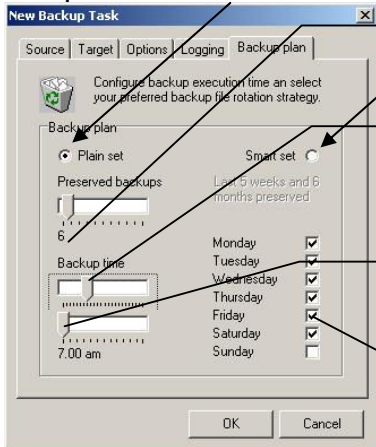
Navigate to X:\RPOffice\libback\ and create RPOfficeAM.log
(Where X: is the drive where the X\libback directory resides).



Email address & ISP
SMTP server details for
Log files.

Backup plan Tab:

Backup Plan: Plain Set for AM & Smart Set for PM.



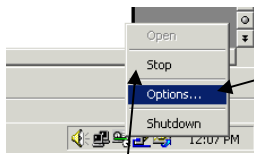
No of backups to keep
before over-riding

Minute Selection

Hour Selection

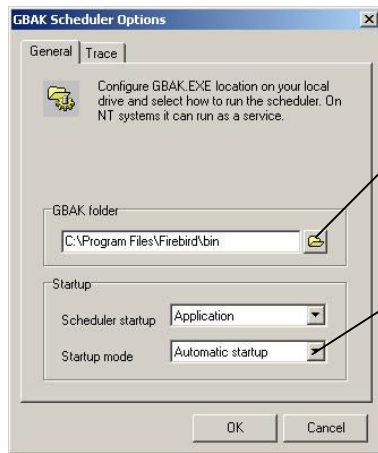
Check the relevant days in
which to backup e.g
Monday to Saturday

In the 'System Tray', right click on the gbaksche icon and select 'Options'



In the General window the path should read
GBAK folder: **c:\Program Files\Firebird\bin**

(NB: AFTER ANY CHANGES TO THE GBAKSCHE SETUP IT HAS TO BE RESTARTED). You can do this by selecting stop then selecting start.



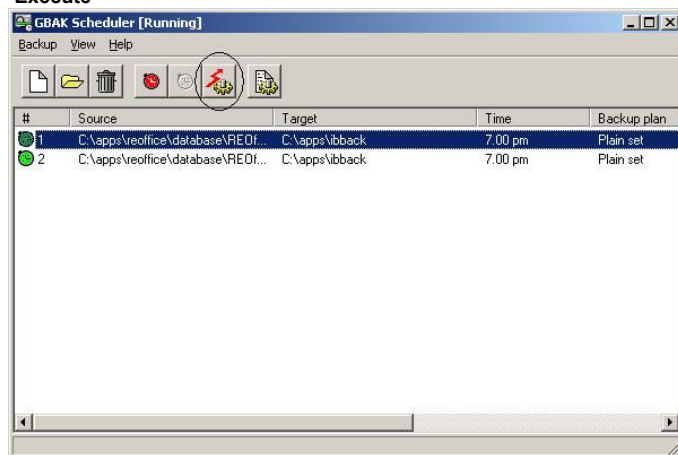
Browse to Location

Change Startup mode to 'Automatic Startup', this will force the Gbak Scheduler to initiate on a system reboot.

Create a shortcut in the Macpro Realtor folder on the server to the RPOfficeAM.log & RPOfficePM.log files so that the client can check it every morning.
Do another backup plan for the evening changing only the time and Log file. Create a log file named RPOfficePM.log.

Next Step: 'Testing the Gbak Scheduler'

Double Click the gbaksche icon in the 'System Tray', now choose the first backup entry and click on the icon 'Execute'



Choose Yes to Confirm execute now!