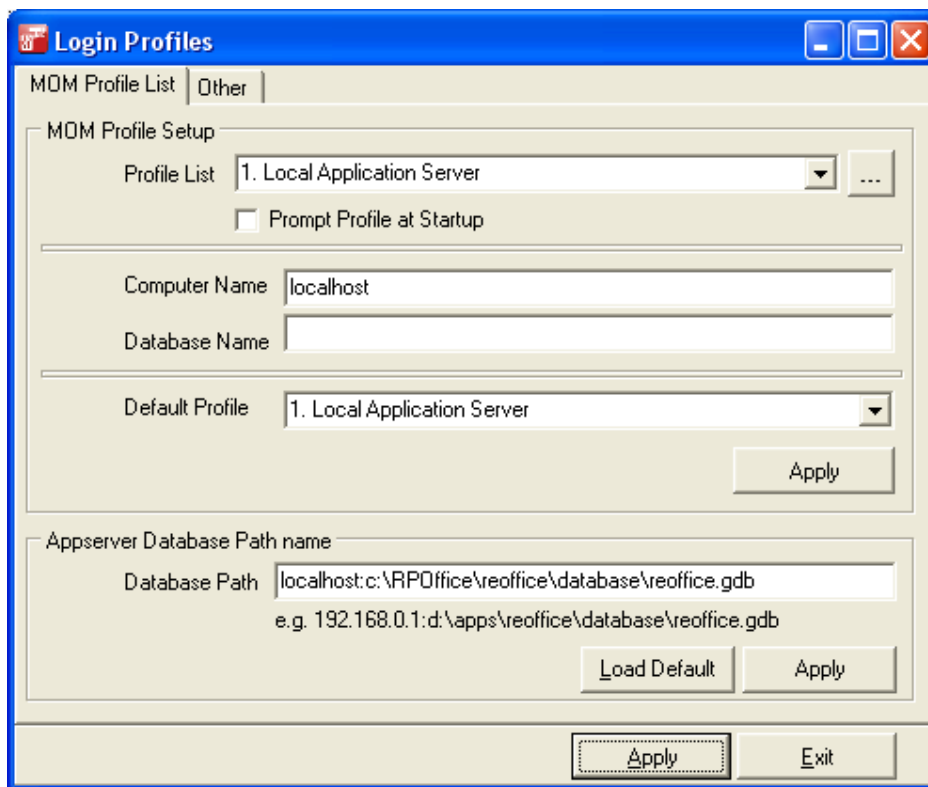


RPOffice Workstation Installation

1. Vista users need to turn off the **UAC** (user account control, this can be located in the control panel|User accounts) prior to installing.
2. Download the RPOffice v6 workstation setup & execute.
3. Accept all the defaults until the database profile is displayed.



4. Copy the "Appserver Database Path name" from another client workstation (do not copy from the server) and enter it into the "Database Path" and select apply then exit. (this can be located in Start|All Programs|Macpro Office Manager|MOM Profile Setup or Start|All Programs|RP Office v6|RP Database Profiles)
5. Then finish the installation & log into RPOffice.